



Ethernet interface on Megatron Printer

In order to install an Ethernet interface on its printers, Megatron chooses to use a Lantronix XPort-03 module. This module converts the Ethernet interface in serial interface.

Ethernet module can be configured in DHCP or with a fixed IP address.

In order to install the printer driver, you must do the following steps :

- 1- Set a fixed IP address with the Lantronix Web Configuration or with your DHCP server and the Lantronix Mac Address (ask to your Network manager).
- 2- Create a new TCP/IP Port
- 3- Install the Printer Driver

Contents

1 Lantronix Web Configuration	2
1.1 Search the IP address.....	2
1.2 Lantronix Xport Device Server Web Page.....	3
1.2.1 Network page.....	4
1.2.2 Other Settings.....	5
2 Windows Driver.....	6
2.1 Create a new TCP/IP Port.....	6
2.2 Driver installation.....	6

1 Lantronix Web Configuration

1.1 SEARCH THE IP ADDRESS

- Download and install the software « Lantronix Device Installer » from the <http://www.lantronix.com> website on a windows computer.
- Connect the printer to the Lan network
- Launch « Lantronix Device Installer » to find the Xport-03 module.



- On the devices found array, search the Hardware Address corresponding to your module. Hardware address is a six hexadecimal number written on a label pasted on the module. Example: 00-20-4A-A9-59-03
- Note the IP address of this XPort-03 module. Example: 192.168.0.108
- Go to the chapter « Network page» to set an IP address accordingly to your network.

1.2 LANTRONIX XPORT DEVICE SERVER WEB PAGE

If module settings have to be changed, (e.g.: set an fixed IP address), you must open the webpage of the XPort-03 module

- With a web browser, open the web page of the IP address.
Example <http://192.168.0.108>

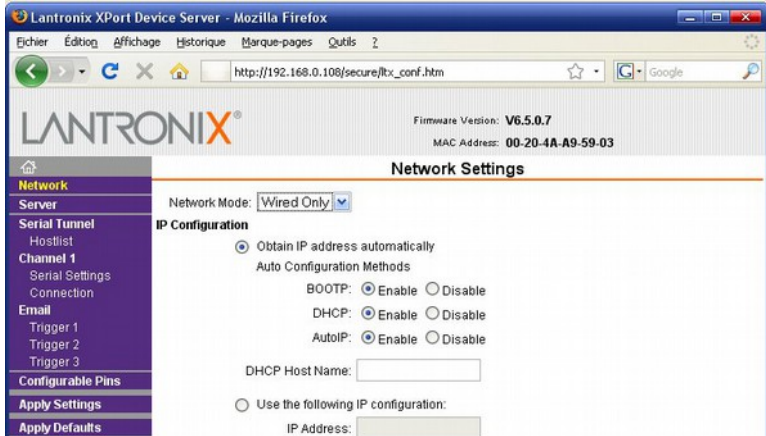


- An authentication window is opened.
Let all values empty and click on OK
- Xport-03 module Home page of the is open.



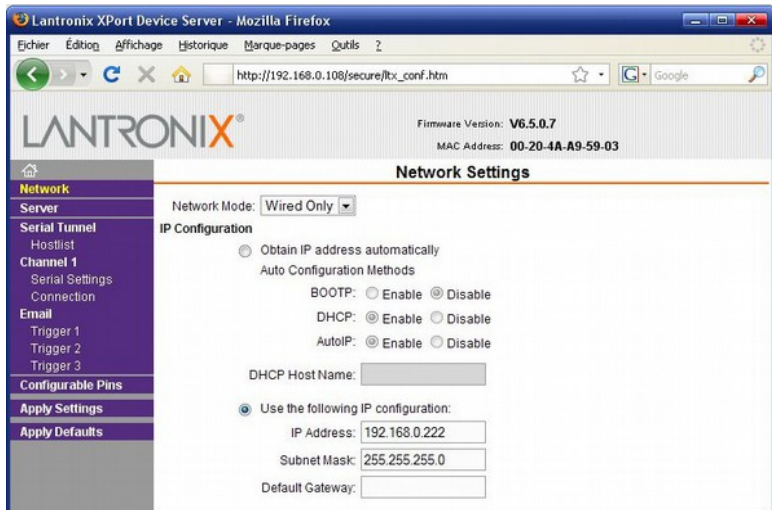
1.2.1 Network page

- DHCP : Obtain IP address automatically
 - Change settings on the network page accordingly to your local Network. Default is "Obtain IP address automatically"



- Click on Apply Settings to apply your changes

- Fixed IP :
 - Set a fixed IP address accordingly to your network. Here the address is set to 192.168.0.222



- Click on Apply Settings to apply your changes

1.2.2 Other Settings

Some changes are made directly by Megatron from the Factory Defaults Settings.

Please don't change them !

- **Channel 1 – Serial settings**
 - **"Baud Rate"** must be set identical to the printer
 - **115200** for MTH-2500 or Mrxi family printers
 - Other choices are also possible accordingly with your printer
 - **"Flow Control"** is set to **XON/XOFF** (Software)
- **Channel 1 – Connection**
 - **"Local Port"** is set to **9100** (Default 10001)

Serial parameters must be identical for the printer and the Lantronix module.

For MTH-2500 family printer, serial parameters are :
115k2 Baud, DataBits: 8, Parity: None, Stop bit: 1.

For Mrxi family printer, serial parameters are :
115k2 Baud, DataBits: 8, Parity: None, Stop bit: 1.

*These parameters are programmed in our factory both in the printer and in the Lantronix Module.
Please don't change them without care ...*

2 Windows Driver

2.1 CREATE A NEW TCP/IP PORT

Now you must install the printer driver.

Driver installation is usual except that you need to install first a new port on your computer.

- In the printer and Fax window, click on add printer.
- Select a local Printer
 - In the 'Select Printer Port' window, select "Create a new port" and choose "Standard TCP/IP Port"
 - In the "Add Port" Window, fill the IP address with the address you set in chapter "Network". A name is automatically filled, you can change it if you want.
 - In the "More Port Information are necessary", select "Standard: Generic Network Card"

2.2 DRIVER INSTALLATION

- Then continue to install the printer driver as usual